

Appendix 1

Approved Fire Service Installations Proposal and
Approval Letter for Compliance with Approval Condition (b)

FIRE SERVICES NOTES:

1. HOSE REEL SYSTEM

- 1.1 HR SYSTEM TO BE PROVIDED AND INSTALLED FOR THE STRUCTURE (EATING PLACE) IN ACCORDANCE WITH THE CODE OF PRACTICE FOR MINIMUM FIRE SERVICE INSTALLATIONS AND EQUIPMENT
- 1.2 HOSE REELS SHALL BE PROVIDED AT THE POSITIONS INDICATED ON PLAN.
- 1.3 SUFFICIENT HOSE REELS TO BE PROVIDED TO ENSURE THAT EVERY PART OF THE AREA CAN BE REACHED BY A LENGTH OF NOT MORE THAN 30m OF HOSE REEL TUBING.
- 1.4 AN MODIFIED HOSE REEL SYSTEM WITH 2000L F.S. WATER TANK TO BE PROVIDED AND TO BE SINGLE END FEED FROM TOWN MAIN. THE LOCATION OF THE FS WATER TANK AND FS PUMP ROOM ARE CLEARLY MARKED ON PLANS.
- 1.5 TWO FIXED FIRE PUMPS (DUTY & STANDBY) TO BE PROVIDED IN THE PUMP ROOM.
- 1.6 NO FIRE SERVICES INLET TO BE PROVIDED FOR THE MODIFIED HOSE REEL SYSTEM.
- 1.7 AN INSTRUCTION PLATE SHALL BE PROVIDED NEXT TO THE BREAK GLASS UNIT FOR OPERATION OF HOSE REEL

2. FIRE ALARM SYSTEM

- 2.1 FIRE ALARM SYSTEM SHALL BE PROVIDED THROUGHOUT THE ENTIRE BUILDING IN ACCORDANCE WITH BS 5839-1 : 2017 AND FSD CIRCULAR LETTER NO.6/2021. ONE ACTUATING POINT AND ONE AUDIO WARNING DEVICE SHOULD BE LOCATED AT EACH HOSE REEL POINT. THE ACTUATION POINT SHOULD INCLUDE FACILITIES FOR FIRE PUMP START AND AUDIO / VISUAL WARNING DEVICE INITIATION.
- 2.2 A CONVENTIONAL TYPE FIRE ALARM PANEL TO BE PROVIDED AND LOCATED INSIDE PUMP ROOM

3. EMERGENCY LIGHTING

- 3.1 SUFFICIENT EMERGENCY LIGHTING SHALL BE PROVIDED THROUGHOUT THE ENTIRE BUILDINGS/STRUCTURES IN ACCORDANCE WITH BS 5266-1:2016 AND BS EN 1838:2013 AND THE FSD CIRCULAR LETTER NO. 4/2021.

3. EXIT SIGN

- 3.1 SUFFICIENT DIRECTIONAL AND EXIT SIGN SHALL BE PROVIDED IN ACCORDANCE WITH BS 5266: PART 1 AND FSD CIRCULAR LETTER 5/2008.

4 MISCELLANEOUS

- 4.1 PORTABLE FIRE EXTINGUISHERS WITH SPECIFIED TYPE AND CAPACITY TO BE PROVIDED AT LOCATION AS INDICATED ON PLANS.
- 4.2 NO EMERGENCY GENERATOR TO BE PROVIDED FOR SERVING THE EMERGENCY POWER. DUPLICATED POWER SUPPLIES FOR ALL FIRE SERVICES INSTALLATIONS COMPRISING A CABLE CONNECTED FROM ELECTRICITY MAINS DIRECTLY BEFORE THE MAIN SWITCH
- 4.3 WHEN A VENTILATION / AIR CONDITIONING CONTROL SYSTEM TO A BUILDING IS PROVIDED, IT SHALL STOP MECHANICALLY INDUCED AIR MOVEMENT WITHIN A DESIGNATED FIRE COMPARTMENT

LEGEND (FOR LAYOUT PLAN)

[H.R.]	HOSE REEL W/ LOCKABLE GLASS FRONTED NOZZLE BOX, STRIKER, C/W FIRE ALARM BELL & BREAK GLASS UNIT
⊕	150mm FIRE ALARM BELL
⊞	BREAK GLASS UNIT
⋈	GATE VALVE
⊞	NON RETURN VALVE
⊙	VORTEX INHIBITOR
⊙	BALL FLOAT VALVE
—	HOSE REEL PIPE
— —	CHECK METER POSITION
(F.E) _{CO2}	5Kg CO2 TYPE FIRE EXTINGUISHER
(F.E) _{D,P}	4Kg DRY POWDER TYPE FIRE EXTINGUISHER
▶	PUMP
[MFA]	CONVENTIONAL TYPE FIRE ALARM PANEL
▶	PUMP CONTROL PANEL

ABBREVIATION

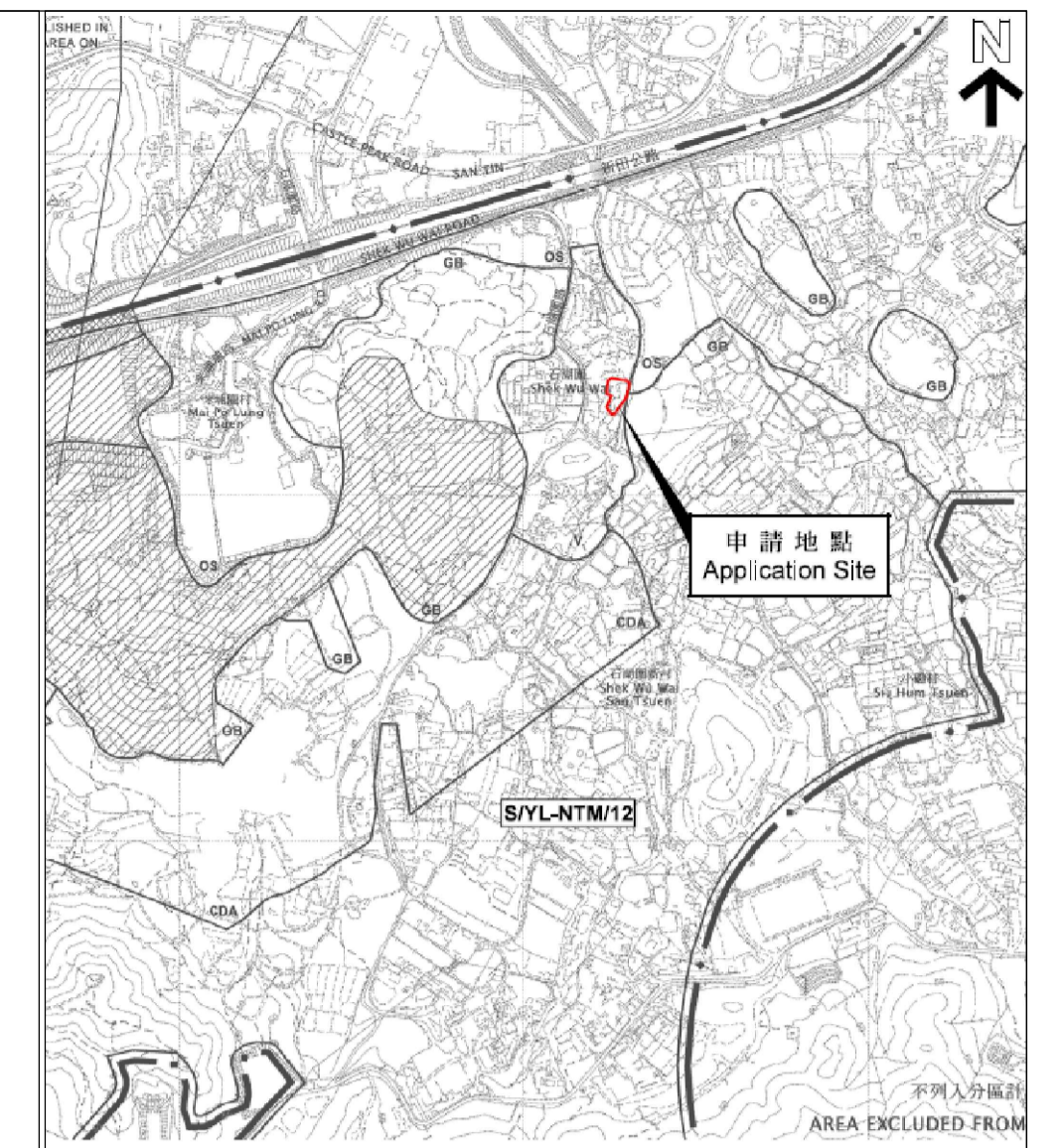
SPR.	SPRINKLER
H.R.	HOSE REEL
F.E.	FIRE EXTINGUISHER
CO ₂	CARBON DIOXIDE
L.P.C.	LOSS PREVENTION COUNCIL
F.S.I.	FIRE SERVICES INSTALLATION
H/L	HIGH LEVEL
M/L	MID LEVEL
L/L	LOW LEVEL
F/A	FROM ABOVE
F/B	FROM BELOW
T/A	TO ABOVE
T/B	TO BELOW
U/G	UNDERGROUND
F.S.	FIRE SERVICES

COLOUR CODE

PIPE SIZES	COLOUR
ø25mm	LIGHT GREEN
ø32mm	RED
ø40mm	PURPLE
ø50mm	YELLOW
ø65mm	BLUE
ø80mm	GREEN
ø100mm	LIGHT BROWN
ø150mm	DEEP BROWN

DRAWING LIST:

DRAWING NO.	REVISION	DRAWING TITLE
EP-NTM445-FS01	A	FIRE SERVICES NOTES, LEGEND, ABBREVIATION, DRAWING LIST, COLOUR CODE AND SITE LOCATION BLOCK PLAN
EP-NTM445-FS02	A	F.S. LAYOUT PLAN ON GROUND FLOOR



LOCATION PLAN (NOT TO SCALE)

REV	DESCRIPTION	DATE	BY
B	FSD SUBMISSION	20-08-2023	WC
A	FSD SUBMISSION	01-02-2023	WC

FSI CONTRACTOR

East Power Engineering Limited

Flat A, 7/F., Hop Shing Commercial Building,
41 Chi Kiang Street, Tokwawan, Kowloon
Fax. : 2394-3772 Tel. : 2397-3238

PROJECT
**PROPOSED F.S. INSTALLATION AT LOTS 411
IN D.D. 105, NGAU TAM MEI, YURN LONG, NEW
TERRITORIES**

DRAWING TITLE

FIRE SERVICES INSTALLATION—
F.S. NOTES, LEGEND, LOCATOIN PLAN,
ABBREVIATION

	INITIAL	DESIGNATION	DATE
DRAWN BY	CAD	CAD	07-08-2022
DESIGN BY	JACKIE	S.ENG	07-08-2022
CHECK BY	CM	PM	08-08-2022
APPROVED BY	—	—	—
PROJECT NO.	NTM-445		
PAPER SIZE	A1	PLOT SCALE	1 : 1
DRAWING NO.	EP-NTM445-FS01		
SCALE	N.T.S	REVISION	A

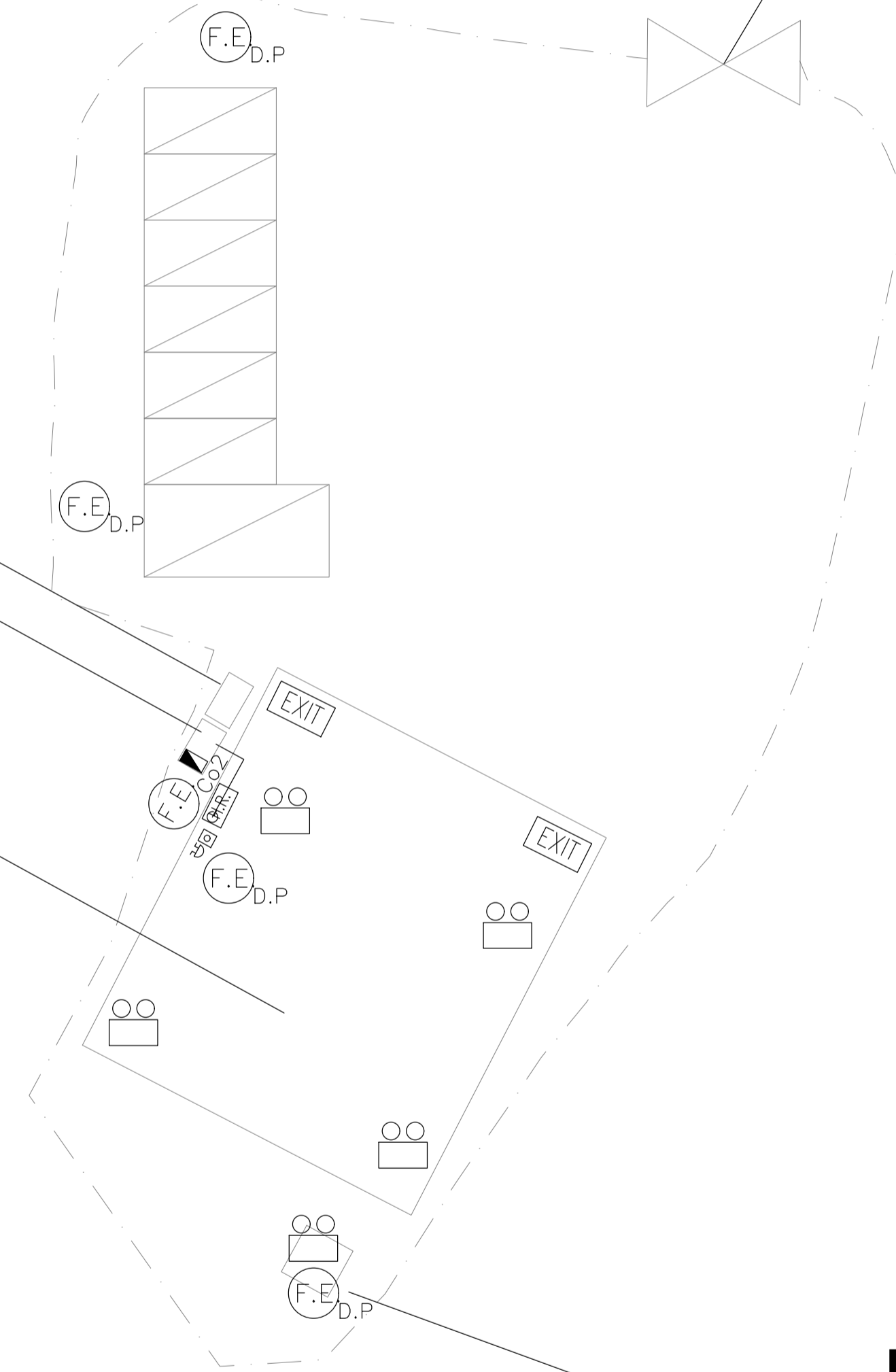
**2000L
FS WATER TANK
Pump Room
(1.96 sq.m., Height: 1.22m)**

**Proposed Eating Place
(225m², 1-storey,
Height: 4m)**

**Meter Room
(4m², Height: 2.5m)**

**Access to
the Site**

6m



REV	DESCRIPTION	DATE	BY
C	FSD SUBMISSION	20-08-2023	WC
B	FSD SUBMISSION	25-05-2023	WC
A	FSD SUBMISSION	01-02-2023	WC

FSD CONTRACTOR
East Power Engineering Limited
Flat A, 7/F., Hop Shing Commercial Building,
41 Chi Kiang Street, Tsewan, Kowloon
Fax : 2394-3772 Tel : 2397-3238

PROJECT
PROPOSED F.S. INSTALLATION AT LOTS 411
IN D.D. 105, NGAU TAM MEI, YURN LONG, NEW
TERRITORIES

DRAWING TITLE
F.S. LAYOUT PLAN ON
GROUND FLOOR

	INITIAL	DESIGNATION	DATE
DRAWN BY	CAD	CAD	07-12-2021
DESIGN BY	JACKIE	S.ENG	07-12-2022
CHECK BY	CM	PM	08-12-2021
APPROVED BY	-	-	-
PROJECT NO.	NTM-445		
PAPER SIZE	A1	PLOT SCALE	1 : 1
DRAWING NO.	EP-NTM45-FS02		
SCALE	1:200	DATE	REVISION
			A

規 劃 署

粉嶺、上水及元朗東規劃處
新界荃灣青山公路 388 號
中環大廈 22 樓 2202 室



Planning Department

Fanling, Sheung Shui &
Yuen Long East
District Planning Office
Unit 2202, 22/F, CDW Building, 388
Castle Peak Road, Tsuen Wan, N.T.

本函檔號 Your Reference

By Email

本署檔號 Our Reference () in TPB/A/YL-NTM/445

電話號碼 Tel. No.: 3168 4072

傳真機號碼 Fax No.: 3168 4074 / 3168 4075

31 August 2023

Lawson David & Sung Surveyors Ltd.
Room 1601, South China Building
1-3 Wyndham Street
Central, Hong Kong
(Attn.: Cannis Lee)

Dear Madam,

Compliance with Approval Condition (b)
Submission of a Fire Service Installations (FSIs) Proposal
Proposed Temporary Eating Place for a Period of 5 Years
in "Village Type Development" Zone, Lot 411 in D.D. 105, Ngau Tam Mei, Yuen Long
(Section 16 Application No. A/YL-NTM/445)

I refer to your submission dated 21.8.2023 regarding the submission of a FSIs proposal in an attempt to comply with the captioned approval condition. Relevant department has been consulted on your submission. Your submission is considered:

- Acceptable. The captioned condition **has been complied with**. Please find detail comments of Director of Fire Services (D of FS) at **Appendix**.
- Acceptable. Since the captioned condition require both the submission and implementation of the proposal, it **has not been fully complied with**.
- Not acceptable. The captioned condition **has not been complied with**.

Should you have any queries, please contact Mr. CHEUNG Wing-hei (Tel: 2733 7737) or Mr. CHAU Nai-yin (Tel: 2733 7781) of the Fire Services Department directly.

Yours faithfully,

(Anthony LUK)
District Planning Officer/
Fanling, Sheung Shui and Yuen Long East
Planning Department

c.c.

D of FS

(Attn.: Mr. CHEUNG Wing-hei)

(Attn.: Mr. CHAU Nai-yin)

CTP/TPB(2)

AL/GL/wm

Detailed comments of D of FS

Appendix

The applicant should be advised that the installation/maintenance/modification/repair work of FSIs shall be undertaken by an Registered Fire Service Installation Contractor (RFSIC). The RFSIC shall after completion of the installation/maintenance/modification/repair work issue to the person on whose instruction the work was undertaken a certificate (F.S. 251) and forward a copy of the certificate to the Director of Fire Services.